

# anew

*Reshaping young adult cancer care, together.*

## Progress Update: Spring 2026

Momentum to improve cancer care and support for adolescents and young adults (AYAs) in BC/Yukon has never been stronger. Here's what we've been up to together with AYAs and those who care for them:

- Participation in the BC Cancer Summit drew record attendance and continues to build momentum for an AYA cancer care and support program in BC/Yukon.
- Research findings are being consolidated to support the development of AYA cancer care program - thanks to ongoing support from The Rix Family Foundation.
- Together with BC Cancer and BC Children's Hospital, we gave 30 presentations to 2,500+ care providers sharing oncofertility care improvements and new resources.
- We received new funding from the Vancouver Foundation to improve cancer care and support for AYAs from rural and remote communities.



**Go Team!**

*We acknowledge that Royal Roads University is located on the traditional Lands and Waterways of the Lekwungen-speaking Peoples, the Songhees and Esquimalt Nations. We also acknowledge the many Indigenous Peoples across Turtle Island and the lasting impacts of colonization.*



Royal Roads  
UNIVERSITY



Canadian Institutes  
of Health Research    Instituts de recherche  
en santé du Canada



New Frontiers in Research Fund  
Fonds Nouvelles frontières en recherche

Provincial Health Services Authority

vancouver  
foundation

# Awareness and AYA Program Co-Design @ the BC Cancer Summit

## Keynote Kudos: From Vision to Action

At the BC Cancer Summit last November, AYAs Nivan Sharma of Prince Rupert and Celina Naguib of Terrace shared their powerful stories about the challenges of navigating cancer care as AYAs and provided insights for change. Delivered to an audience of over 800 people, this keynote focused on changes in AYA cancer care in BC/Yukon.

They were followed by insights from AYA champions at BC Cancer, BC Children's Hospital and Anew on collaborative efforts to improve care from targeted counselling services to proactive fertility care and resource development specific to AYAs - all ultimately moving to establish an AYA cancer care program for BC/Yukon.

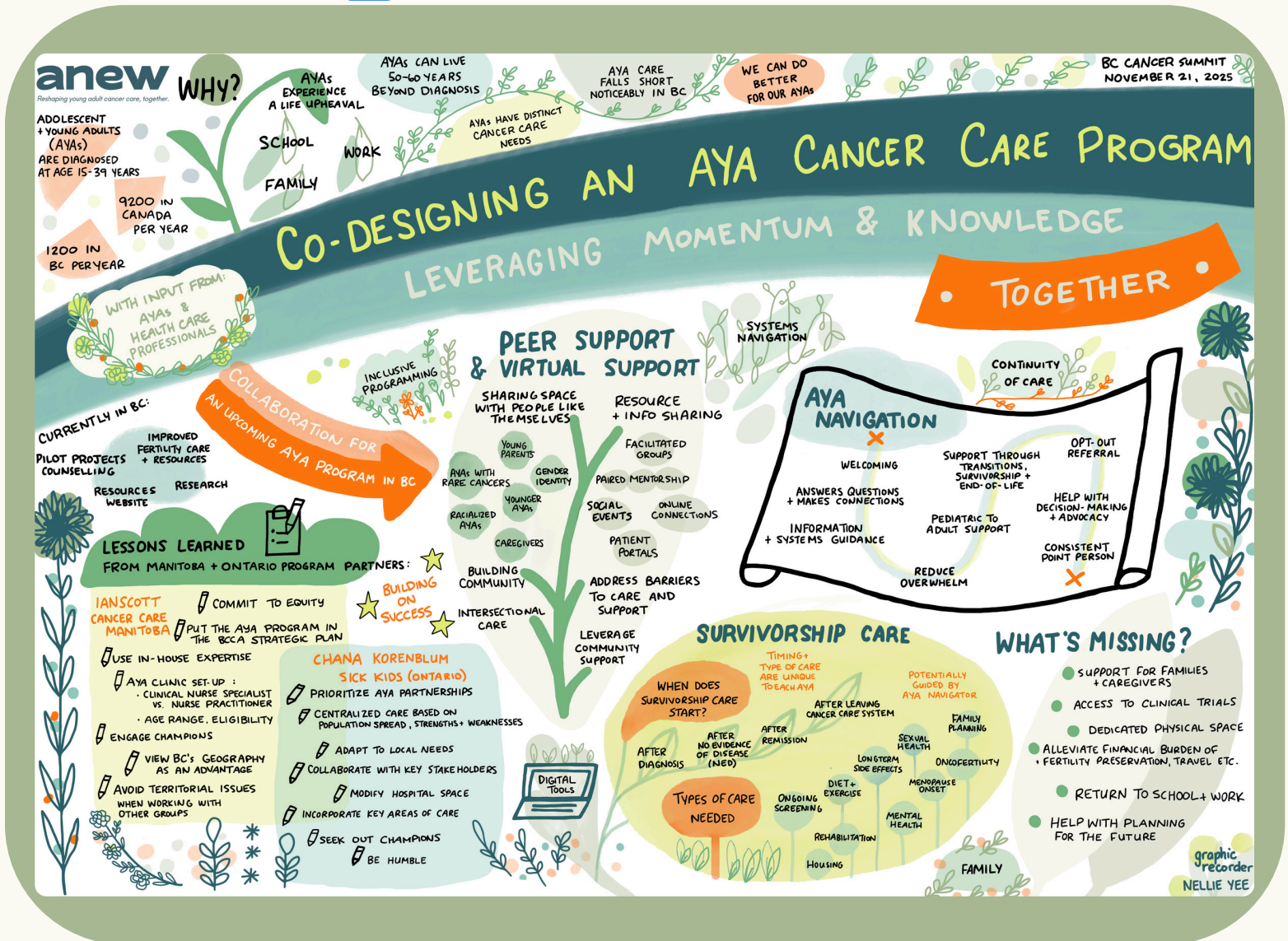
[View the Keynote recording](#)



## Collaborative Co-Design

Over 80 participants, including more than 30 AYAs from throughout BC/Yukon, and 50+ care providers, researchers and supporters, then took part in a 3-hour session to help co-design an AYA cancer care and support program. AYA program leaders, Ian Scott of CancerCare Manitoba and Dr. Chana Korenblum of Ontario's Sick Kids and Princess Margaret Hospitals, shared strategic advice and lessons learned. Round table discussions then ensued on navigation, peer and virtual support, survivorship care and what's missing - all building on established priorities including the need for readily available counselling, improved fertility care and AYA specific resources. These insights will inform the development of AYA programming in BC/Yukon.

[Copy or share the graphic recording below](#)





# Bringing Realities & Needs of AYAs from Rural & Remote Communities to the Forefront

*"I know first-hand the challenges of navigating cancer as an AYA far from a major centre,"  
~Nivan Sharma, Prince Rupert (left)*

*"Geography adds layers of isolation, financial strain and logistical barriers making the burden of cancer heavier," ~Celina Naguib, Terrace (right)*

AYAs Nivan Sharma and Celina Naguib, along with other AYAs from across BC/Yukon are members of the research team for our newly funded, three-year Vancouver Foundation project focusing on better understanding and addressing the unique cancer care and support needs of AYAs from rural and remote communities in BC/Yukon. Partnering with InspireHealth Supportive Cancer Care, Anew will lead this effort collaborating with rural and remote AYAs and care providers across BC/Yukon to identify priorities to improve care including tangible actions. The learnings will inform the provincial AYA cancer care and support program plan now under development.



## Pivotal Support from The Rix Family Foundation


The Rix Family Foundation provided key support in 2025 to ensure the needs and priorities of all AYAs, including those from underserved and underrepresented communities, are reflected in efforts to develop an AYA cancer care and support program for BC/Yukon. They recently allocated further support to develop a comprehensive program plan in partnership with AYAs, the cancer care system and community. Work is underway and our appreciation is unmatched.



## Imagine... AYA Cancer Immersive Experience - On the Road

Imagine... is Anew's immersive experience co-developed with a talented team of AYAs in 2024 to provide a felt-sense of what it's like to navigate cancer as an AYA. Imagine... debuted to capacity audiences at the BC Cancer Summit that year. This past October, the Imagine... recording was screened as part of the opening for the Canadian Cancer Research Conference in Calgary. A group of AYA developers then shared their experiences being part of the production including personal impacts and those observed within the cancer care system.

A similar appearance is planned for the Canadian Association of Psychosocial Oncology Conference this June in St. John's, Newfoundland.

[View Imagine...](#) 

*We honour the many AYAs at the heart of this work and extend a heartfelt thank you to all of the AYAs and care providers who are helping to reshape cancer care for AYAs. We also honour and remember the AYAs who are no longer physically here. Your presence lives on and inspires us to reshape cancer care for all AYAs.*

Please connect anytime: [hello@anewresearch.ca](mailto:hello@anewresearch.ca) or [anewresearch.ca](http://anewresearch.ca)

